

**BRAND NEW
10 SERIES**



SANY

Quality Changes the World

Operating Weight: 76200 kg Bucket Capacity: 4.2 - 5.4 m³ Engine Power: 506 HP (377 kW)/ 1800 rpm

**SUPERIOR PERFORMANCE
SUPERIOR RELIABILITY
SUPERIOR SERVICEABILITY**



SY800C-10HD

HYDRAULIC EXCAVATOR

SPECIFICATIONS

SY800C-10HD

ENGINE

Model	Isuzu GB3-6WG1X
Type	Direct Injection, 6 Cylinder, Water Cooled
Rated Engine Power	506 HP(377 kW)@ 1800 rpm
Max. Torque	2138 N.m @ 1500 rpm
Displacement	15.68 L

CONTROL SYSTEM

Control System	DOMCS Intelligent Controller
Control Hydraulic System	Positive Flow
Remote Monitoring System	GPRS, GPS, GIS

HYDRAULIC SYSTEM

Main Pumps	2 Variable Displacement Axial Piston Pumps
Max. Flow	2 X 450 lpm
Pilot Pump	1 Gear Pump
Travel Motor	Axial Piston Motor with Parking Brake
Swing Motor	Axial Piston Motor with Swing Holding Brake

RELIEF VALVE SETTINGS

Implement Circuit	34.3 Mpa
Swing Circuit	29.4 Mpa
Travel Circuit	34.3 Mpa
Pilot Circuit	3.9 Mpa
Heavy Lift Circuit	34.3 Mpa*

UNDERCARRIAGE & WORKING DEVICE

Track Shoes (Each side)	47
Upper Rollers	3
Lower Rollers	8
Std. Track	650 mm
Std. Boom	7000 mm
Std. Arm	3000 mm
Std. Bucket	4.6m ³ HD

PERFORMANCE

Max. Travel Speed(High/Low)	4.5/2.9 km/h
Swing Speed	7.3 rpm
Grade ability	70%/35°
Ground Pressure	110 kPa
Max. Tracking Force	480 kN
Bucket Digging Force	402 kN
Arm Digging Force	345 kN

SERVICE REFILL CAPACITIES

Hydraulic Tank	620 L
Fuel Tank	940 L
Engine Oil	57 L
Radiator	70 L
Swing Device	2x6.0 L
Travel Device	2x20 L

CAB

AC	Std.
FOPS / ROPS Cabin	Std.
Mechanically Extendable U/C	Std.

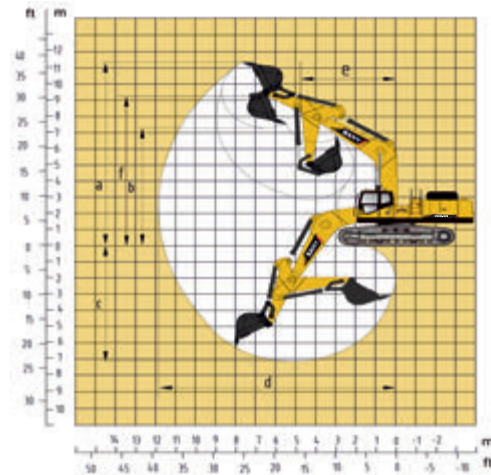
DIMENSION (Unit: mm)



DIMENSION (Unit: mm)

DIMENSION (Unit: mm)	Arm 3000
A. Overall Length	12865
B. Overall Width (Transportation)	4320
C. Overall Height	4855
D. Upper Width	3460
E. Overall Height of Cab	3800
F. Std. Track Shoe Width	650
G. Track Gauge (Transportation)	3380/ 2780
H. Min. Ground Clearance	880
I. Rear-end Swing Radius	4220
J. Distance between Tumbles	4650
K. Under Carriage Length	5865

WORKING RANGE



WORKING RANGE (Unit: mm)

WORKING RANGE (Unit: mm)	Arm 3000
a. Max. Cutting Height	11200
b. Max. Dumping Height	7250
c. Max. Digging Depth	7620
d. Max. Digging Reach	12050
e. Min. Swing Radius	5520
f. Max. Height at Min. Swing Radius	9780

BUCKET

Capacity	7m Boom	
	2.6m Arm	3m Arm
4.6m ³ HD Std.	✓	✓
4.2m ³ HD Opt.	✓	✓
5.4m ³ GP Opt.	✓	-

SANY HEAVY INDUSTRY INDIA PVT. LTD.

HEAD OFFICE

Address : Plot No. E-4, Chakan Industrial Area Phase-III,
Village Kuruli, Taluka Khed, District Pune - 410501,
Maharashtra, INDIA.

Tel : +91 21 35670288, Fax: +91 21 35670300

E-mail : customercare@sany.in

Website : www.sany.in

Toll Free No.: 1800-209-3337



Material & specification are subject to change without prior notice in accordance with our continuous technical innovations. Featured machines in photos may include additional equipment.