

BRAND NEW



SANY

Quality Changes the World

Operating Weight : 20760 Kg

Standard Blade Length : 14ft (4267mm)

Engine Power : 250 HP (186 kW)/ 2200 rpm

MINING HAUL ROAD MASTER

◎ SUPERIOR OPERATOR
COMFORT

◎ POWERFUL POWERTRAIN
SYSTEM

◎ RELIABLE & DURABLE
STRUCTURES

◎ ADVANCED ENGINE
TECHNOLOGY

◎ PRECISE & SMOOTH
HYDRAULIC CONTROL

SMG200C-8
MOTOR GRADER

SPECIFICATIONS

SMG200C-8

POWER SYSTEM

Engine	Cummins
Emission	EPA Tier 4(f)
Model	QSL 9
Rated Power	186 kW(250HP)
Rated Rotation Speed	2200 rpm
Displacement	9 L
Max Torque	1085 @1500Nm

DIMENSIONS

Basic Size : L*W*H	9187mm × 2725mm × 3498mm
Front and Rear Axle Base	6300 mm
Middle and Rear Wheel Base	1524 mm
Min. Ground Clearance	370 mm

MASS LOAD

Weight of basic type	17960kg
----------------------	---------

OPERATING PARAMETER

Blade Length	4270 mm
Blade Height	620 mm
Blade Tilt Angle	± 90°
Blade Rotation Angle	360°
Blade Max. Lifting Height	480 mm
Blade Max. Cutting Depth	715 mm
Blade Cutting Angle Range	5°~40°

MOVING PARAMETER

Gears	8 forward and 6 reverse
Forward Speed	4.0/5.4/8.0/10.9/19.1/23.4/32.3/46.8(km/h)
Reverse Speed	3.2/5.9/8.7/13.5/25.3/37 (km/h)
Front Wheel Steering Angle	± 50°
Front Wheel Tilt Angle	± 17°
Joint Steering Angle	Left 22°, right 22°
Front Axle Swing Angle	Up 16°, down 16°
Min. Turning Radius	7.5 m
Tire	17.5-25-20PR

PERFORMANCE PARAMETERS

Draw Bar Pull	114 KN
Blade Down Force	104 KN

TANK CAPACITY

Hydraulic Oil Tank Capacity	115 L
Fuel Tank Capacity	340 L

STANDARD AND OPTIONAL CONFIGURATIONS

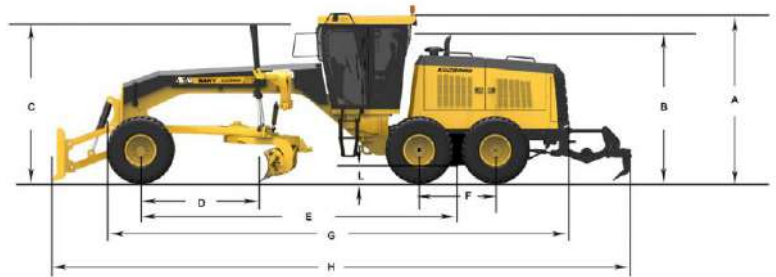
Standard	Optional
14ft Moldboard	12ft Moldboard
HVAC	-
-	Front Dozer Blade
-	Front Scarifier
-	Rear Ripper
Warning Light	-
Rear Camera	-
-	Automatic Leveling System

Notes: Due to the fact that engine configurations may vary based on different options, technical specifications may change without prior notice.

DIMENSION

(Unit: mm)

A. Height of Top of Cab	3498
B. Height to exhaust stack	2915
C. Height to Top of cylinder	3310
D. Length - Front Axle to Moldboard	2520
E. Length - Front Axle to Mid Tandem	6300
F. Length - Between Tandem Axles	1524
G. Length - Front Tire to Rear of Machine	9187
H. Overall Length - Front Dozer Blade to Ripper	11554
I. Width - Tire Centre Lines	2184
J. Width - Outside Front Tires	2725
K. Width - Outside Front Tires	2634
L. Ground Clearance at Rear Axle	370



UNIQUE FEATURES OFFERING

- Advanced Engine Technology (CRDI)
- Direct Drive Power shift Transmission
- Revolutionary Cab
- Advanced Joystick Controls
- LED Lights
- USB enabled Music system

SANY HEAVY INDUSTRY INDIA PVT. LTD.

HEAD OFFICE

Address : Plot No. E-4, Chakan Industrial Area Phase-III,
Village Kuruli, Taluka Khed, District Pune - 410501,
Maharashtra, INDIA.

E-mail : customercare@sany.in

Website : www.sany.in



Material & specification are subject to change without prior notice in accordance with our continuous technical innovations. Featured machines in photos may include additional equipment.