

**NEW**



**SANY**

Quality Changes the World

Operating Weight: 24410 kg    Bucket Capacity: 1.2- 1.4 m<sup>3</sup>    Engine Power: 173 HP (128.5 kW)/ 2100 rpm

**GraMa**

SPECIALLY DESIGNED FOR  
**GRANITE & MARBLE APPLICATION**

**EXCELLENT PERFORMANCE**  
**HIGH RELIABILITY**  
**EASE OF SERVICEABILITY**



**SY240C-9 HD GraMa**  
HYDRAULIC EXCAVATOR

# SPECIFICATIONS

# SY240C-9HD GraMa

## ENGINE

Model	Isuzu CC-6BG1TRP
Type	6 Cylinder, Inline, Water Cooled
Rated Engine Power	173HP(128.5 kW) @ 2100 rpm
Max. Torque	637.9 N.m @ 1800 rpm
Battery	2 X 12 V
Displacement	6.49 L

## CONTROL SYSTEM

Control System	DOMCS Intelligent Controller
Control Hydraulic System	Positive Flow
Working Modes	H, S, L, B
Remote Monitoring System	GPRS, GPS, GIS

## HYDRAULIC SYSTEM

Main Pumps	2 Variable Displacement Axial Piston Pumps
Max. Flow	2 X 246 lpm
Pilot Pump	1 Gear Pump
Travel Motor	2 Axial Piston Motor with Parking Brake
Swing Motor	1 Axial Piston Motor with Swing Holding Brake

## RELIEF VALVE SETTINGS

Implement Circuit	34.3 MPa
Power Boost	37.3 MPa
Swing Circuit	25.5 MPa
Travel Circuit	34.3 MPa
Pilot Circuit	3.9 MPa

## UNDERCARRIAGE & WORKING DEVICE

Track Shoes (Each Side)	49
Upper Roller (Each Side)	2
Lower Roller (Each Side)	9
Track Guard (Each Side)	2
Std. Track	600 mm Ultra HD12.5mm THK
Std. Boom	5900 mm
Std. Arm	2900 mm
Std. Bucket	Granite Bucket

## PERFORMANCE

Max. Travel Speed(High/Low)	5.5/3.5 km/h
Swing Speed	11 rpm
Grade ability	70% / 35°
Ground Pressure	48.01 kPa
Max. Tracking Force	209 kN
Max. Bucket Digging Force	175 kN
Max. Arm Digging Force	134kN

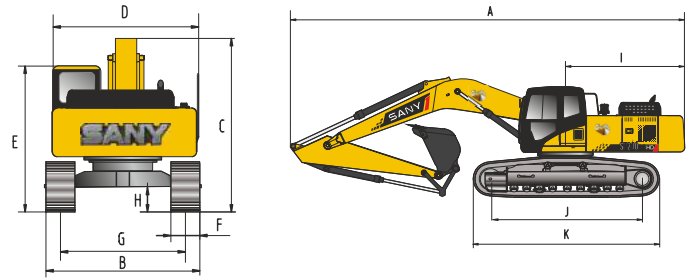
## SERVICE REFILL CAPACITIES

Hydraulic Tank	201L (Tank)	240L (Refill)
Fuel Tank	340 L	
Engine Oil	24.5 L	
Radiator	29 L	
Swing Device	5.3 L	
Travel Device	2x5.0 L	

## CAB

Auto climate control AC	Std.
Cabin Guard(Front & Top)	Std.
ACLS(Auto Lubrication)	Opt.
Fuel Refill Pump with auto cutt-off switch	Opt.

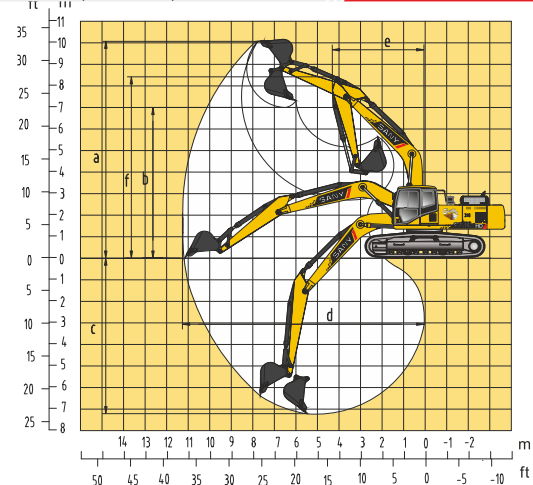
## DIMENSION (Unit: mm)



## DIMENSION (Unit: mm)

	Arm 2900	Arm 2500
A. Overall Length	9920	9920
B. Overall Width	2980	2980
C. Overall Height	3550	3550
D. Upper Width	2710	2710
E. Overall Height of Cab	3075	3075
F. Std. Track Shoe Width	600	600
G. Track Gauge	2380	2380
H. Min. Ground Clearance	470	470
I. Rear-end Swing Radius	2890	2890
J. Distance between Tumbles	3640	3640
K. Under Carriage Length	4445	4445

## WORKING RANGE (Unit: mm)



## WORKING RANGE

	Arm 2900	Arm 2500
a. Max. Cutting Height	9640	9270
b. Max. Dumping Height	6725	6405
c. Max. Digging Depth	6785	6340
d. Max. Digging Reach	10150	9690
e. Min. Swing Radius	3800	3915
f. Max. Height at Min. Swing Radius	7940	8125

## BUCKET

Capacity	Width (mm)	Weight (kg)	Arm Length	
			2.9m	2.5m
Granite Bucket- Std.	1046	1281	✓	-
1.4 m <sup>3</sup> GP-Opt.	1609	1075	✓	✓
1.2 m <sup>3</sup> HD-Opt.	1312	928	✓	✓

## SANY HEAVY INDUSTRY INDIA PVT. LTD.

### HEAD OFFICE

Address : Plot No. E-4, Chakan Industrial Area Phase-III,  
Village Kuruli, Taluka Khed, District Pune - 410501,  
Maharashtra, INDIA.

E-mail : [customer@care@sany.in](mailto:customer@care@sany.in)

Website : [www.sany.in](http://www.sany.in)

**Toll Free No.: 1800-209-3337**



Material & specification are subject to change without prior notice in accordance with our continuous technical innovations. Featured machines in photos may include additional equipment.